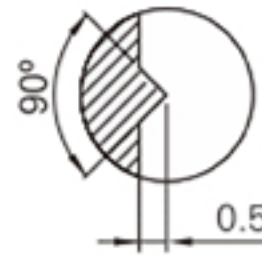
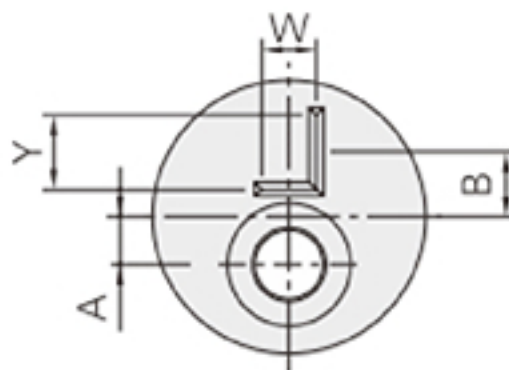


WTCPBS  
WTCPW  
WTCPCT  
WTCBWT  
WTCPCTT

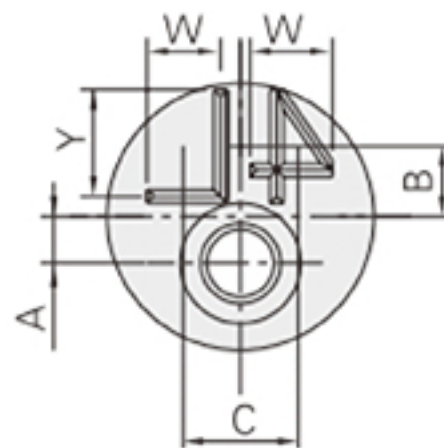


Catalog No.		
WTCPBS	1M(1↑)	M5
WTCPBW	2M(2↑)	
WTCPCT	3M(3↑)	
WTCBWT	2M(1↑)	M8
WTCPCTT	3M(2↑)	

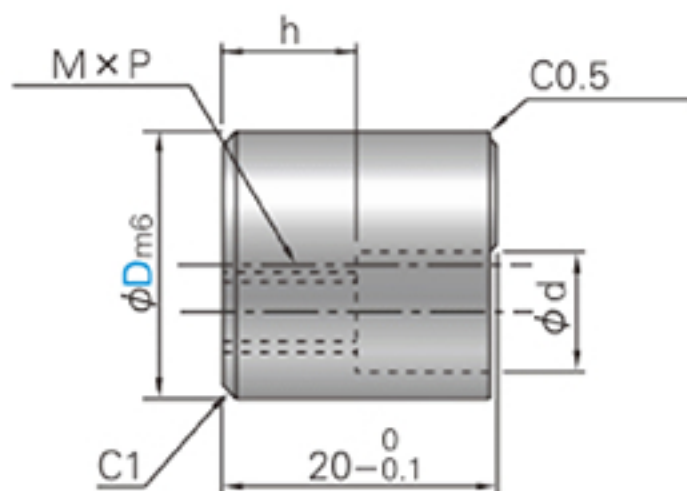
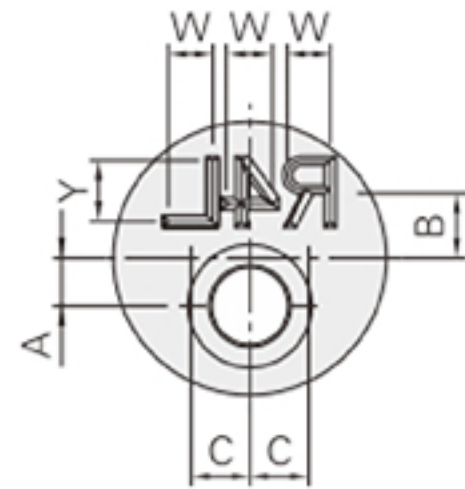
1M



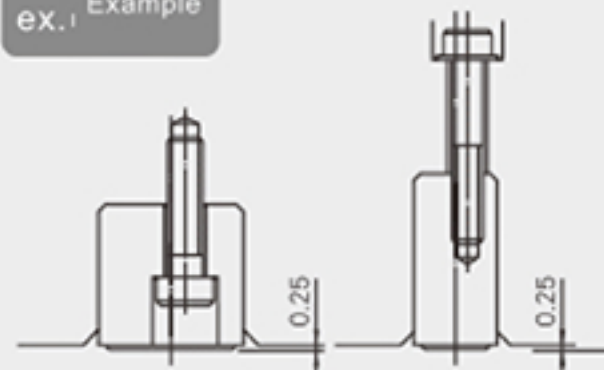
2M



3M



ex. Example



ORDER

Catalog No. - CHR  
WTCPCTT 24 - R4L



SKD11  
60-63HRC

Catalog No.		CHR			A	B	C	MxP	ød	h	W	Y	øDm6	
Type	D													
WTCPBS	16	0 1 2 3 4 5 6 7 8 9 10 ABCDEFGHIJKLM NOPQRSTUVWXYZ	M5	1M	2	5.2	—	M 6xP1.0	9	10	2.5	3.5	16	+0.018 +0.007
	20				3.5	5.2	—				4	6	20	
	24				5.5	4	—				6	8	24	
WTCPBW	20			2M	3.5	4.75	5.6				4	5.5	20	+0.021 +0.008
	24				5.5	4	8				6	8	24	
	24				5.5	4	5				4	6	24	
WTCPCT	24		M8	3M	5.5	4	5	4	6	24				
WTCPBWT	24				M10xP1.5	13.5	7	5.5	5.5	24	+0.021 +0.008			
WTCPCTT	24							3.3	5					

